



McHenry County Illinois Genealogical Society

Connections Newsletter

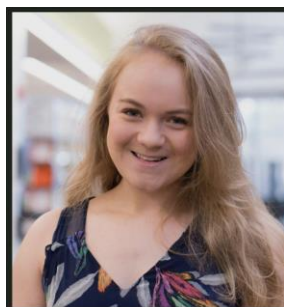
mcigs@mcigs.org

PO Box 184, Crystal Lake, IL 60039

Volume 43, Issue 6

McHenry County Illinois Genealogical Society

June 2024



June Meeting

Thursday, 13 June 2024

7:00 PM

Doors open 6:30 PM

In Person

McHenry County College

8900 Route 14, Crystal Lake, IL

Room C104

“Colonial America”

Presented by

Katherine Korte Andrew

Katherine Korte Andrew MS/LIS is an author, genealogist, graphic designer, archivist, and historian based in Chicago with over eight years of professional genealogy research experience. She specializes in researching German-speaking and Germanic ancestors, elusive female ancestors, Quaker families among others.

Katherine is Executive Director and archivist at Hinsdale Historical Society in DuPage County. She was previously Managing Editor of National Genealogical Society’s (NGS) online monthly publication. Katherine is a member of NGS, Association of Professional Genealogists, Indiana Genealogical Society, the Germanic Society, and others. A number of articles by Katherine can be found in NGS’ monthly publication, Allen County Genealogical Society of Indiana LINES and Utah’s Genealogical Association CROSSROADS publication.

From the Editor...

Your personal research can be of importance to other researchers, even if the family lines and places of research are different. Sharing just how you found that bit of information, or how you discovered you were researching the wrong line (we have all done that!), can be of use to the rest of us going forward. Maybe you found a website that wasn't all it was cracked up to be, either because the information could easily be found elsewhere, or too much money to access, or the site was too difficult to use. If you share what you've done, you may save someone else the time and money from going there.

Professional researchers understand the importance of writing as they research. By doing that, you will find the "holes" in your research and be able to go forward, or in a different direction. How did your writing resolve a problem?

Newsletter editors are always looking for articles from their readers to share with others and this editor is no different. If you have something to share, please do! A paragraph or two, or more, is always appreciated.

Hope to hear from you soon!

Ann Wells
MCIGS Newsletter Editor



Trip to Newberry Library

By Susan Durbin, 1st VP, Program Chair

Our first trip, as a group, to Newberry Library was a success. Our trip started in Crystal Lake at the Pingree Road Train Station. As soon as we drove up to the front of the library, we were greeted by Rachel who led us into the library and directed us to the lockers and where we could pick up our reader cards. Matthew Rutherford, our March speaker, met us as well and led us to the second floor to start our day of research.



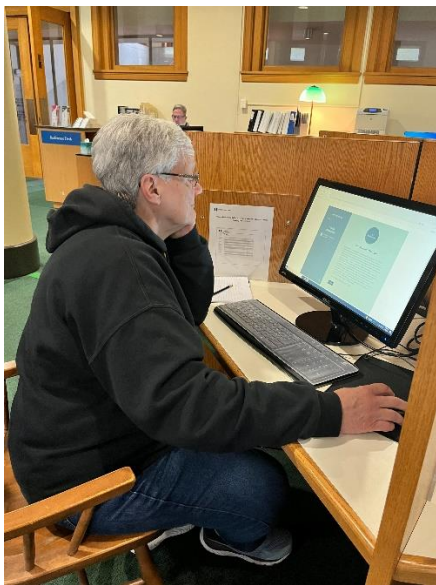
L to R: Susan Durbin, Laurie Stage, Arlyn Booth, Claudia Conroy, Julie Cahill Tarr, Lori Friese and Jeffrey (sorry, no last name given)

We received a lot of guidance while there. If we asked a question, they knew what books to read or where to direct us. The books were brought to us and some of us used computers to find what we were looking for. There was a combination of success in finding

Continued on page 35

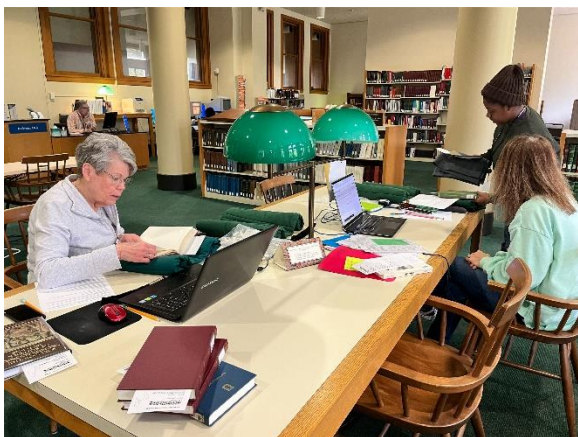
Continued from page 34

information and not successful. But even a trip of not finding what we wanted leads us to further research in other directions. So, all in all, making it a good day!



Arlyn Booth using an in-house computer at Newberry.

Making it an even better day ... was getting to know other members better. Thank you, Lori, Arlyn, Jeffrey, Julie, Claudia, and Laurie for sharing this wonderful experience with me.



Claudia Conroy and Laurie Stage, with library assistant.

We are hoping to have more research events in the near future and hope you will join us.

Upcoming Events

All events are CDT. P-in person; H-hybrid and Z-Zoom presentation only.

Thursday, June 6, 6 PM, (H), Winnebago Boone Counties Genealogical Society. 6685 East State St, Rockford IL.

"Swedish Family History Research" with Maureen Brady. In-person speaker, but also available via Zoom)

[Zoom registration for this meeting](#)

Tuesday, June 11, 7 PM (P), Lake County Genealogical Society. Meeting at Cook Memorial Library, 413 N. Milwaukee Ave.

"Emigration & Immigration: The Story of Your Immigrant Ancestors" To be presented by Jacquie Schattner.

LCIGS1170@gmail.com .

Wednesday, June 12, 7 p.m. (H)

Fountaindale Public Library "Illinois Prison and Penitentiary Records," presented by Steven J. Wright. To attend virtually, go to <https://us02web.zoom.us/j/86810410114>. In person - 300 W. Briarcliff Road, Bolingbrook, IL. help@fountaindale.org

Saturday, 15 June, 10:30 AM (H), CAGGNI, "German Genealogy Sources Beyond the Basics" with James Beidler. In person at Arlington Heights Memorial Library Cardinal Room, 500 N. Dunton Avenue, Arlington Heights. Register [here](#) for Zoom. Email: webmaster@caggni.org

Continued on page 36

Continued from page 35

Monday, 17 June, 7 PM (H), Kane County Genealogical Society,
 “*How to Find the Genealogy of a Home and Those Who Lived in It*” presented by Vicki Ruthe Hahn. Meeting in the Mary Lynn Alms Educational Center (Meeting Room), Town and Country Library, 320 E. North St., Elburn, IL To register [here](#).

Saturday, 22 June, 10 AM – 2 PM, McHenry Public Library, host. Meet and speak with various genealogy/history organizations in McHenry County. See more details elsewhere in the newsletter. Contact <https://mchenry.librarycalendar.com/> for more information.

Thank You!

Thanks to the following for making donations to MCIGS:

Marilyn Dyre, Laurence Hartman, and Suzanne Hoffman.

Your donation is appreciated. Thank you all!

May 2024 Meeting’s Recap

Submitted by Sandra Braid, MCIGS Secretary

Jacque Kriepps Schattner’s presentation, entitled “New Language? Deciphering Genealogy Documents” included tricks, tips, and resources – even for old German script. Jacque listed four steps when you are

working with foreign languages; 1. Handwriting (transcribing); 2. Translating; 3. Resources; 4. Education/skills.

Jacque started by asking how many of us have gotten records but haven’t been able to read them, because they are in a foreign language? Her first suggestion was to get the records, make a copy of the record and skim the content. She also suggested that you make an “alphabet list.” By that she meant on your computer (or on paper), list the letters of the alphabet down one side of the page. Then look in the record for each letter of the alphabet. Copy (or cut and paste) each recognized letter from the foreign language and place it next to the English letter equivalent. Now you have an alphabet list for your foreign language record, but you still have the original document (and its copy) to compare.

Jacque showed us several examples of foreign alphabet letters and how they eventually evolved into the words we now know. She explained how the “y” came to be in the spelling of words like “Thy.” Jacque said that in Olde English there was a single letter “th” and it sounded like thorn and looked like a “P” with a curve. The problem came about when printing of books began. The printers could not print that letter, so they used the “y” instead.

She mentioned that in some Old Polish there is a letter, sometimes called “Dark L” that looks like a lower case “l” with a slash across it. In the United States that letter just became “l.” If you are working in German, the letter “s” can look different, depending on the location of the letter within a word. If the “s” is at the beginning of the word it will look like an upside-down fish. If the letter is in the middle of the word, it will look like a fishing
Continued on page 37

Continued from page 36

pole and if it is at the end of the word it will look like a hook. If you should happen to find a word that has an “m” with a dash over it, it means double the letter.

Jacque has done lots of work in German and mentioned that the only place to find German place names is at MeyersGaz.org. This site lists 100’s of place names in ABC order.

She also mentioned that if you are getting stuck when you are looking at the records, you might want to look at the formatting of other records that may be more readable. Most records, especially church records, followed the same format, even though they might have been written in a different “hand.”

In her handout, Jacque gave us several general websites (like FamilySearch, Script byu.edu, and ancestry) as well as several places to find foreign names (MeyersGaz.org, and FamilySearch), as well as translate

foreign documents (Google Translate, Babylon, and Wiktionary.org). All of the steps above included her last step (Education/skills).

Jacque’s final comment was don’t start with the first step, start with the one you are the best at.

Things of Interest

Free Webinar- “Getting the Scoop on Your Ancestors from Old Newspapers” – [HERE](#)

Need a book, but can’t find it locally? Have you checked Internet Archive’s Open

Library? Any book they have can also be read as an eBook. <https://openlibrary.org/> .

Make use of your local library’s ILL. The reference desk can walk you through the process of borrowing a book from another library. If you go to worldcat.org, you can look for the book and see if it is in a nearby library or from a distance. Your reference librarian can take it from there.

Other book sources are [Hathitrust](#), [Google Books](#), [Family History Library](#), [Digital Public Library of America](#), among others.

The National Genealogical Society’s 2025 Conference will be in Louisville, KY 23-26 May 2025 (Memorial Day Weekend). Mark your calendars! The conference will be held in the conference hotel which will eliminate having to trek miles to get there.

McHenry County Genealogy Mega Group

You are invited to come and learn about the various possibilities for genealogical research in McHenry County on Saturday, 22 June 2024 from 10 AM to 2 PM, hosted by McHenry Library. Several of these organizations will be represented at this event and will share what they have and how to access them. The organizations who will be present are McHenry Public Library, the McHenry County Illinois Genealogical Society, McHenry County Historical Society, BIGWILL (British Interest Group of Wisconsin and Illinois) and the Crystal Lake Branch of the Family History Center.

Continued on page 38

Continued from page 37

After the various presentations you will have an opportunity to visit with the representatives of each organization.

McHenry Library is located at 809 Front Street (Route 31) in McHenry. Check the library's [website](#) for more information.

Records of St. Mary's (Episcopal) Mission, Spring Grove, IL

Originally published in Vol. III, No. 2, of MCIGS Quarterly, April – June 1985

St. Mary's (Episcopal) Mission, of Spring Grove, formerly Blivens Mills, was officially organized in 1873. Like many missions of the time, the church had full-time priest and failed to thrive. In the early 1900's the church was razed to make way for a private home which was still standing as of 1985. The following are excerpts from the mission parish register, which is now housed at the Archives and Historical Collections of the Episcopal Diocese of Chicago. Website: <https://episcopalchicago.org/diocesan-archives/>.

3 June 1878 Memorandum- The first services of the St. Mary's were held on weekday evenings in the school house during the year 1868 by Rev. Peter Arvedson, of Algonquin. During 1869 and 1870, Rev. Arvedson held services monthly. By 1871, into 1872, Sunday services were held, most of the time by Rev. E. H. Miller of Wilmot, Wisconsin. Funds were raised to build a church. On 5 May 1873, the mission was organized as St. Mary's, sanctioned, and approved by Rt. Rev. Henry John Whitehouse, Bishop of the Protestant Episcopal Church in Illinois. First

offices were appointed – Robert Richardson and Robert Tweed, Wardens; William Slater, Secretary and John Tweed, Treasurer.

In the spring of 1873, the building began on a lot purchased by John E Mann, of Wisconsin and deeded in trust to the Bishop of Illinois for the use of the Mission. The building was completed in 1875. The cost of the building lot was about \$50, money donated by members and friends. Forty dollar for the stained glass window was contributed by William G Hibbard of Chicago and hardware of \$10 by C. R. Larrabee. A kind lady of Pomfret, Connecticut, gave a new linen surplice and a Communion set. Total cost, including gratuitous labor was about \$1500.

On 3 June 1876, the Mission was visited by the Rt. Rev. William E McLaren, Bishop of Illinois to consecrate the mission. Services were conducted on alternate Sunday afternoons, with Rev. Peter Arvedson being in charge.

Memorandum signed by Robert Richardson, dec'd, Warden; Robert Tweed, Warden; John Tweed, Treasurer; Peter Arvedson, Missionary-in-Charge and William Slater, Secretary.

1878 – Robert Richardson died on 31 July 1878. He was buried on 3 August 1878. Mr Richardson was known for his contributions to the church.

1880 – Rev. Peter Arvedson died 22 November 1880. The funeral was officiated by The Rt. Rev. William E McLaren and assisted by Rev. E. F. X. Cleveland, M. D. of Dundee, and the Rev. John Hedman of Chicago. Services were held in St. John's Church in Algonquin, 25 November 1880. He was 58 years of age.

Continued on page 39

Continued from page 38

29 June 1890 – Services held in St. Mary's at 10:30 a.m. by the Rev. Dr. E. F. Cleveland of Dundee. The church was well filled and the Baptism of Glen A Esh and Grace E Wheeler took place.

20 April 1894 – Funeral services were conducted by Rev. J. B. Williams of Harvard, on the remains of Thomas Snowden, nephew of the late William Slater.

CONFIRMATIONS

17 September 1871 – officiant Rt. Rev. William E Armitage, Bishop of Wisconsin, held at Wilmot Mission.

Robert Richardson, Eleanor Jessie Richardson, Joseph James, Martha James, Mary Anne Goodhand, Anne Goodhand, Mary Toynton, Charles Coulman, Fanny Coulman, and Elizabeth Walton.

3 June 1876 – officiant Rt. Rev. William E McClaren, Bishop of Illinois. Margaret Slater, Hannah Richardson

23 September 1881 – By the Rt. Rev. William E McClaren, Bishop of Illinois. Sarah Richardson, Esther Richardson.

MARRIAGES

23 March 1876 – Pulaski Allen and Fanny E Coulman. Peter Arvedson, Officiant.

2 December 1876 – John Tweed and Susan Smiley. P. Arvedson, Officiant

7 March 1878 – William J Overton and Eliza E Richardson. Richard Overton and Sarah M Richards, Witnesses. P. Arvedson, Officiant.

2 November 1880 – Robert Tweed, Jr., and Fannie E. Bell. C. E. Bell and Florence Motley, Witnesses. P. Arvedson, Officiant.

From an undated and unsigned note in the Parish Register. "Through sickness, death and removals this book has not been fully credited with the doings and happenings of St. Mary's Mission. The Warden and Secretary and their respective wives having died in the past few years as well as several of its most devout and sincere members, notably the widow of the founder of St. Mary's Church mission, Mrs. Robert Richardson, who gave liberally and donated much of the interior embellishment. These facts are not recorded, and it is very regrettable."

Continued on page 40

Woodstock High School Alumni Directory – "The Blue and The White" 1914

From MCIIGS Quarterly, Vol III, No1, January – March 1985

Class of 1878

Gardner, Levi A Grand Rapids, MI
McClaren, Dr G M 491 Selby Ave, St.
Paul, MN

Sondricker, William H

Class of 1879

Austin, Nellie L., m. Charles H Butler
Frankfort, KS

Choat, Susie K m. F W Streets
Medford, OR

Cooper, Fannie L m. Charle E Badger
Appleton, WI

Eckert, Jessie m. Jos E Bohner
Furer, Augusta S m. E E Bagley
Ashland, OR

Continued on page 40

Continued from page 39

Hickox, Exa D m. E W Allen Woodstock, IL
Munger, Mary E m. Edward Morse
Chicago, IL

Murphy, Julia
Richard, Frank H Carlsbad, NM
Whitney, Mary H m. Charles S Northrop
Wilkie, Bessie m. Frank H Richard
Carlsbad, NM

To be continued

Continued from page 39

**LIST OF NAMES IN PARISH
REGISTER**

From about 1872

Allen, Pulaski
Allen, Sarah Mabel
Campbell, Lisle William
Campbell, Viola Frances
Coulman, Charles Robert
Coulman, Edward William
Coulman, Fanny Eleanor
Coulman, James Blonden
Coulman, John Oether
Coulman, Merlie Evelyn
Coulman, Mrs Mina Ann
Earing, Norman Ward
Esh, Glen Albyn
Esh, Richard Oswald
Esh, Vyvian Stugdale
Goodhand, Ann Maria
Goodhand, Anne
Goodhand, Charles
Goodhand, George Daniel
Goodhand, Mabel
Goodhand, Mary Anne
Hoffman, Henrietta
Hoffman, Mark Jay
Hoffman, Philip Gordon
Imeson, Jonathan
Imeson, Mrs Mary

James, Ada D
James, Amanda Ida
James, Annie Emma
James, Francis William
James, Frederick Joseph
James, Ina Evelyn
James, Joseph Aaron
James, Martha Isabella
James, Sarah Felicita
McIlvaine, Mary
Motley, Nettie Adelia
Rowson, Laurance Elias
Rowson, Addie Isabel
Rowson, Fannie Jane
Rowson, John
Richardson, Ada Josephine
Richardson, Esther
Richardson, Hannah
Richardson, Ivy
Richardson, Mrs Eleanor J
Richardson, Robert
Richardson, Sarah
Sill, Mrs Peter
Slater, Mrs Margaret
Stevens, Betty Urana
Stevens, Clinton B
Stevens, James Glen
Stevens, Joy Eleanor
Stevens, Mrs Sophia
Stevens, Orrin
Toynton, Carrie Jane
Toynton, Mrs Mary
Tweed, Amanda Ethel
Tweed, Levi John
Tweed, Mary Bell
Tweed, Mary Ida
Tweed, Oliver Arthur
Tweed, Robert George
Tweed, Robert Gerald
Walton, Mrs Elizabeth
Wheeler, Eleanor Richardson
Wheeler, Grace Elizabeth
Wheeler, Jessie Robert